



SS Pinna (+1942)

Details

general

nationality: [british](#)
 purpose: [transport](#)
 type: [tanker](#)
 propulsion: [steamer](#)
 date built: 1910

details

weight (tons): 6121 grt
 dimensions: 133,1 x 16,8 x 8,7 m
 engine: Quadruple expansion engine.
 power: 517 n.h.p.
 speed: 10 knots

about the loss

cause lost: [air raid](#)
 date lost: [03/02/1942](#) [dd/mm/yyyy]
 casualties:

about people

builder: [J. C. Tecklenborg A. G., Wesermünde](#)
 owner: [Anglo-Saxon Petroleum Co. Ltd., London](#)

captain:

about the wreck

depth:
 orientation:
 protected:
 war grave:

updates

entered by: [Vleggeert Nico](#)
 entered: 24/02/2008
 last update: [Vleggeert Nico](#)
 last update: 24/09/2009

Position

[Vleggeert Nico](#) 24/02/2008

latitude: 00°52'0X" S
 longitude: 104°19'0X" E
 division: 1'=60"

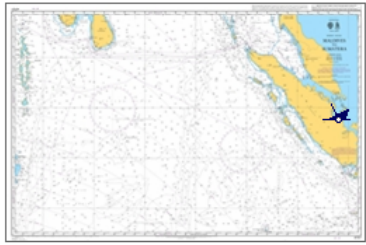
[add position to my marks](#)

show neighbour. wrecks: [members only](#)

[check AIS](#)

[insert new position](#)

Pictures



[Letzens Jan](#) 22/10/2009
[Maldives-Sumatra](#)

This is a thumbnail version of the chart [Maldives-Sumatra](#). You do not have sufficient rights to see this chart in full resolution [11693x7440 pixels]. Click [this link](#) to subscribe to this service.



[insert new picture](#)

History

[Allen Tony](#) 03/02/2009

Pinna SS was a British Steam Tanker of 6,121 tons built in 1910 by Tecklenborg, Geestemunde for DDG Hansa, Bremen as the BIRKENFELS. In 1914 she had new owners and was renamed the TANDEM SS. In 1915 she again had new owners and was renamed POLSHANNON SS. In 1922 she was purchased by Anglo Saxon Petroleum and renamed PINNA SS. On the 3rd February 1942 she was hit in air raid by Japanese aircraft south of Singapore and beached.

ref. [Allied Merchant Ship Losses in the used: Pacific & SE Asia](#)

[insert new history](#)

Documents

[insert new document](#)



LAT: 11°44,1XXN LON: 106°48,9XXE

